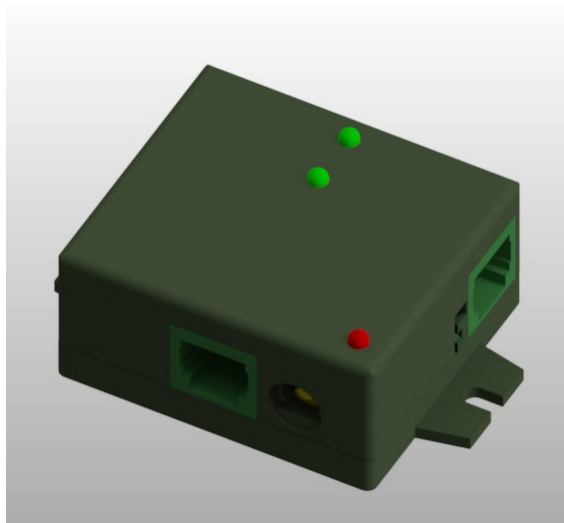




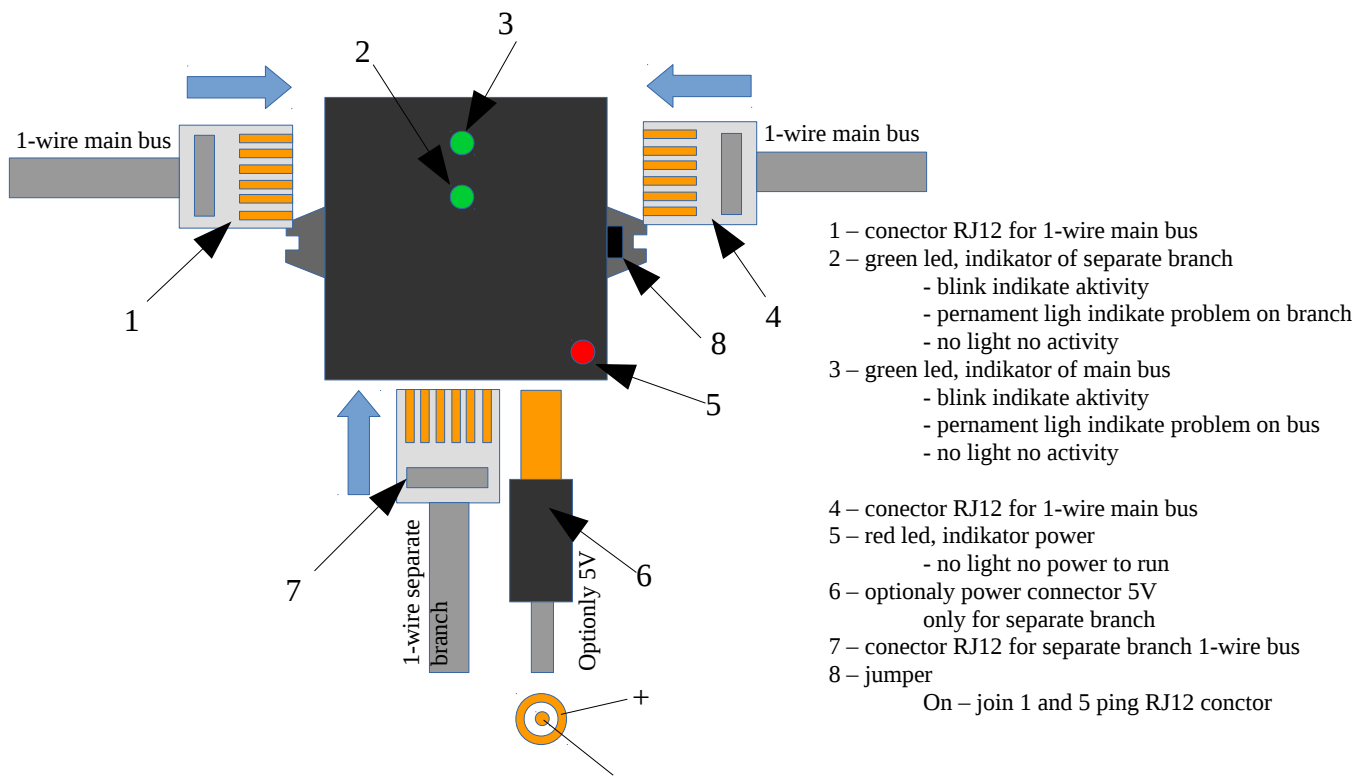
1-WIRE SIMPLE HUB **SH008**



1-WIRE SIMPLE HUB

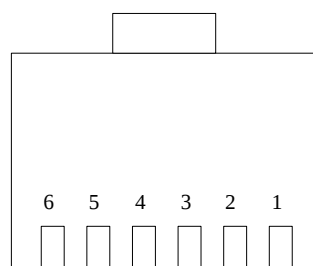
DESCRIPTION

This device allow increases number 1-wire slave devices , length bus or change typology bus.
This device is exactly for create long branch from main bus, because standard one-wire has simple line typology max. length 340m and branch can by max. 30cm length.



PIN CONFIGURATION RJ12 CONECTOR

PIN	SIGNAL NAME	DESCRIPTION
1	V _{DD}	5 V DC
2	GND	Ground
3	OW	1-Wire Data (only 5V level logic)
4	GND	Ground
5	N.C. [V _{DD}]	If jumper ON then 5V DC else No Connection
6	N.C.	No Connection



Looking into Female RJ12 Connector

POWER SUPPLY:

Main power must be 5V from 1-wire main bus.

Optionally may be add 5V from power connector, but this power is only for separate 1-wire branch. If not used than for separated branch will be use power supply from bus main bus.

Own electricity consumption is max.30 mA.

Some one-wire devices use 4-wire cable with power pin 5 instead pin 1 on RJ12 connector. In this case may use jumper who join this pines. Jumper join pin 1 and 5 on both main and separate branch.

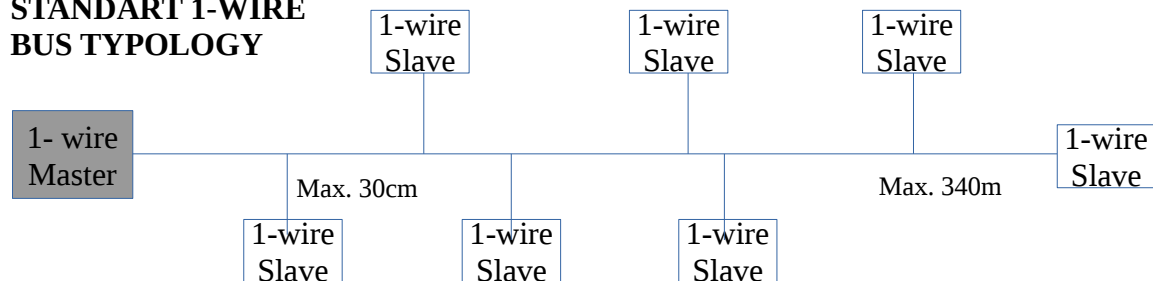
1-WIRE DATA

Use only 5V logic level.

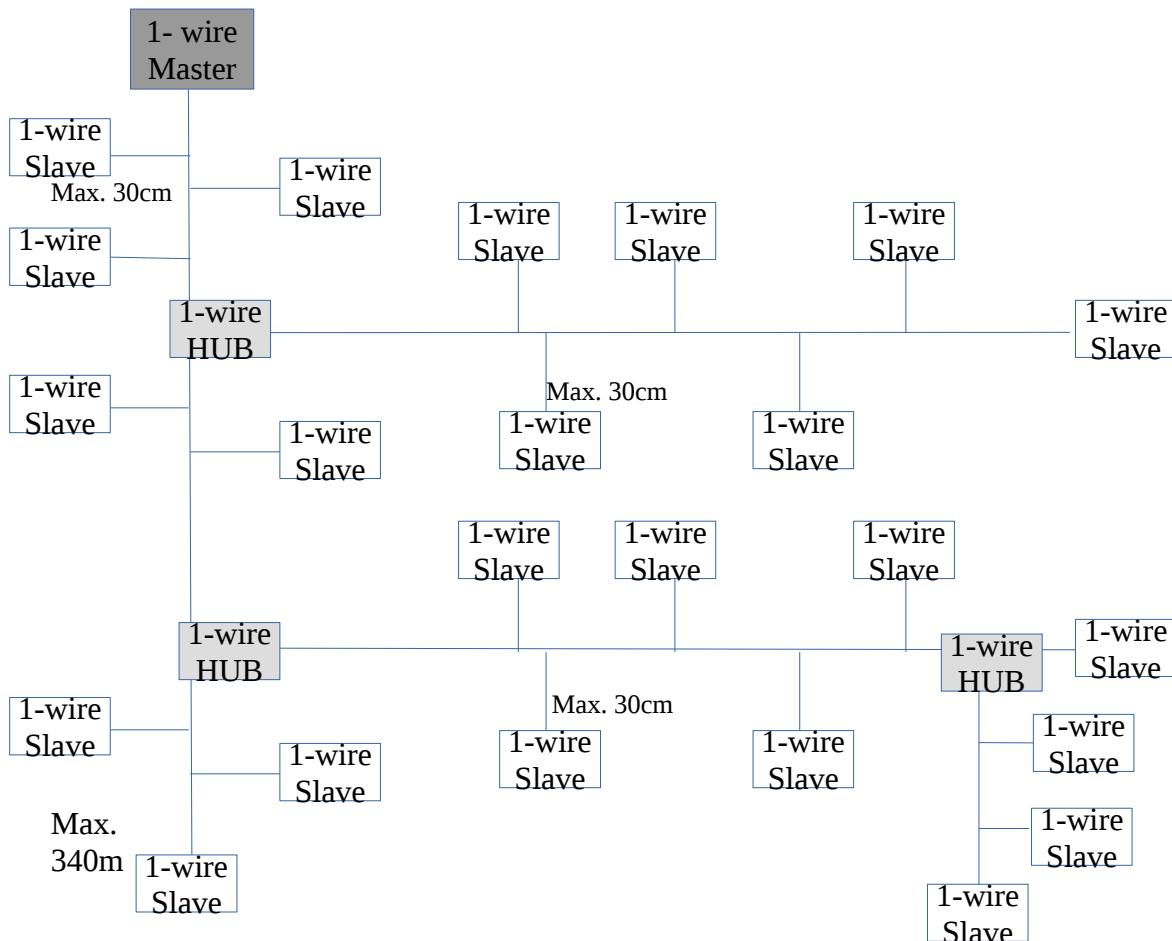
Separate 1-wire branch has 2,2K Ω pull up resistor.

Main bus must be connected to master or branch other HUB, because have not pull up resistor.

STANDART 1-WIRE BUS TYPOLOGY



EXAMPLE 1-WIRE HUB USE

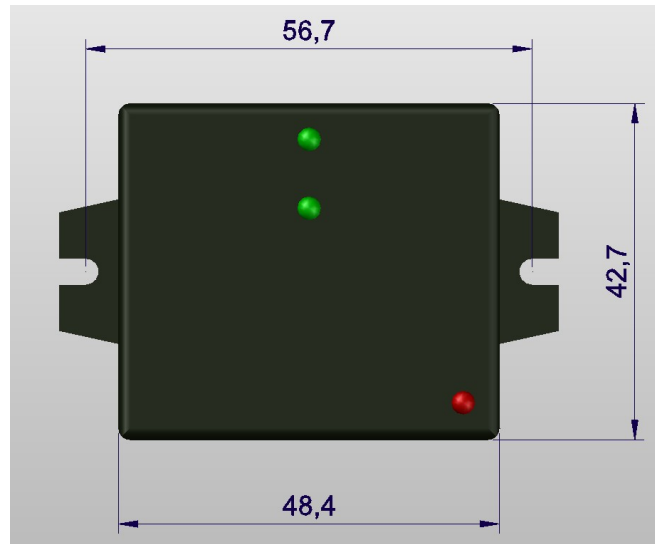


WARNING:

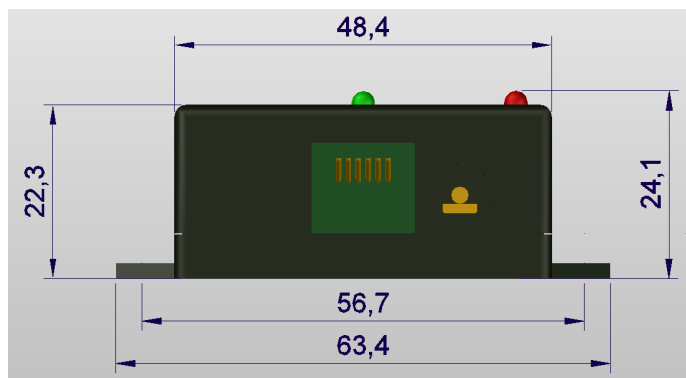
Using HUB you can increase branch length but do not increase total length of wire from slave to master. Maximum wire length from slave to master is 340m with use twisted pair, every pass through the separate branch of HUB decrease this length about 70m.

DIMENSION:

Top view:



Front view:



More information:

- web page seahu <http://www.seahu.cz>

Writer:

Ing. Ondřej Lyčka in September 2017

version document: 1.02